



CR-X 3D Printer User Manual

- ◆ This user manual is for standard CR-X.
- ◆ Because of software or hardware upgrades and model differences, new revisions may not be listed in this guide.
- ◆ Please plug the power cord into a three-hole power jack.
- ◆ Detailed instructions for use are available on the TF card.



Notes

1. Do not use the printer any way other than described herein in order to avoid personal injury or property damage.
2. Do not place the printer near any heat source or flammable or explosive objects. We suggest placing it in a well-ventilated, low-dust environment.
3. Do not expose the printer to violent vibration or any unstable environment, as this may cause poor print quality.
4. Before using experimental or exotic filaments, we suggest using standard filaments such as ABS or PLA to calibrate and test the machine.
5. Do not use any other power cable except the one supplied. Always use a grounded three-prong power outlet.
6. Do not touch the nozzle or printing surface during operation as they may be hot. Keep hands away from machine while in use to avoid burns or personal injury.
7. Do not wear gloves or loose clothing when operating the printer. Such cloths may become tangled in the printers moving parts leading to burns, possible bodily injury, or printer damage.
8. When cleaning debris from the printer hotend, always use the provided tools. Do not touch the nozzle directly when heated. This can cause personal injury.
9. Clean the printer frequently. Always turn the power off when cleaning, and wipe with a dry cloth to remove dust, adhered printing plastics or any other material off the frame, guide rails, or wheels . Use glass cleaner or isopropyl alcohol to clean the print surface before every print for consistent results.
10. Children under 10 years of age should not use the printer without supervision.

CONTENTS

Dear Consumers:

Thank you for choosing our products. For the best experience, please read the instructions before operating the Printer. Our 3D team will always be ready to give you the best service. Please contact us via the phone number or e-mail address provided at the end when you encounter any problem with the Printer.

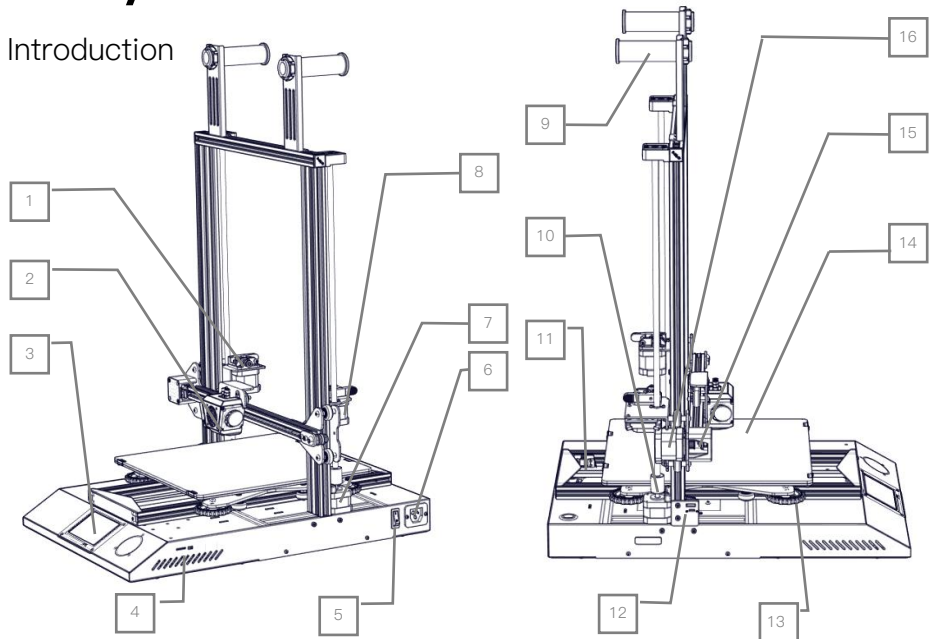
For a better experience in using our product, you may learn how to use the Printer in the following ways:

1. View the accompanied instructions and videos on the TF card.
2. Visit our official website at www.creality3d.cn You will find relevant software/hardware information, contact details and operation and maintenance instructions on the website.

Introduction.....	1
General List.....	2
Device Installation.....	3
Cable Connection.....	4
Screen Information.....	5
Loading Filament.....	6
Bed Leveling.....	7
Software Installation.....	8
First Printing.....	9
Corrective Maintenance.....	10
Circuit Wiring.....	11

01/

Introduction

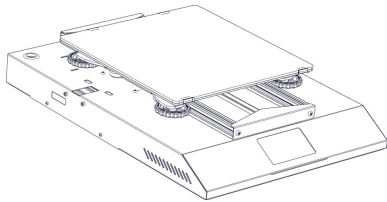


- | | | |
|-----------------------|--------------------|---------------------------|
| 1. Extruder 1 (E1) | 6. Power Socket | 11. Y Limit Switch |
| 2. Nozzle Kit | 7. Z-axis Motor | 12. Z Limit Switch |
| 3. Touch Screen | 8. Extruder 2 (E2) | 13. Larger Hand Twist Nut |
| 4. TF Slot & USB Port | 9. Filament Holder | 14. Platform |
| 5. Power Switch | 10. Coupling | 15. X Limit Switch |
| | | 16. X Stepper |

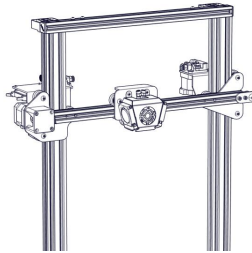
Parameters	
Model	CR-X
Printing Size	300*300*400mm 270X270X400mm(Dual Color)
Molding Tech.	FDM
Nozzle Number	1
Slice Thickness	0.1mm-0.4mm
Nozzle Diameter	0.4mm
Precision	±0.1mm
Filament	1.75mm PLA
File Format	STL/OBJ/AMF
Working Mode	Online or TF card offline
Slice Software	Creality Slicer/Cura/Repetier-Host/Simplify3D
Power Supply	Input:100-240V 50/60Hz Output: 24V
Total Power	480W
Bed Temp.	≤100°C
Nozzle Temp.	≤250°C
Resume Print	Yes
Filament Detector	No
Auto Leveling	Yes
language Selection	Yes
Operating System	Windows XP/Vista//7/8/10 MAC/Linux
Printing Speed	≤180mm/s, Normal 30-60mm/s

02/

General List



Base Frame



Gantry Frame



Tool Box



Filament(1kg)

Tool List

No.	Image	Name	Qty
1		Wrench & Screw Driver	1 set
2		TF Card & Reader	1 set
3		Spade	1
4		Pliers	1
5		0.4mm Nozzle Cleaner	1

No.	Image	Name	Qty
6		Filament Holder Bracket	2
7		Filament Holder Tube	2
8		Filament Holder Tube Nuts	2
9		Power Cable	1
10		USB Cable	1

No.	Image	Name	Qty
11		PTFE Tube	2
12		Spare Parts	2 set
13		M5X25 black Hex-Bolt and Lock Washer	4 set
14		M4X8 Screw and M4 T- nut	4 set

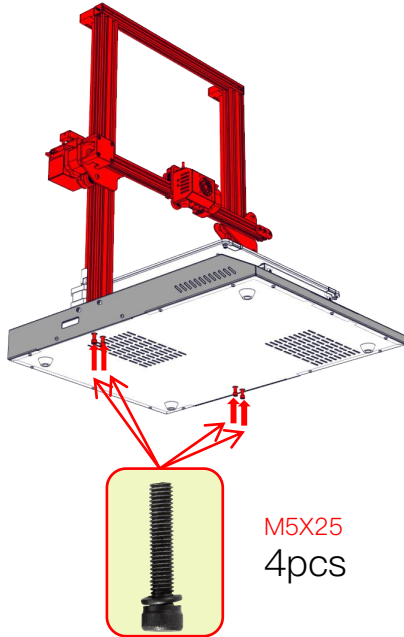
*The list is for reference, subject to the actual object.

03/

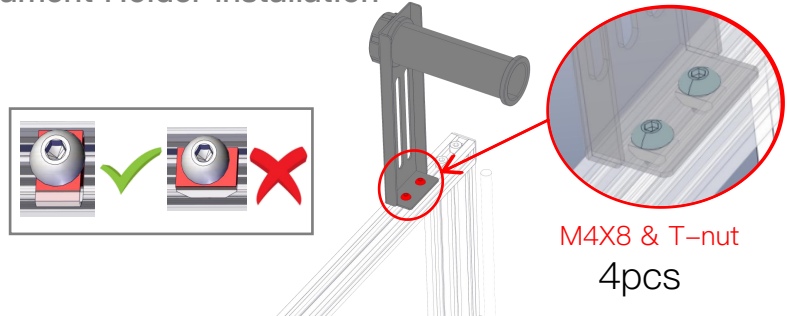
Device Installtion



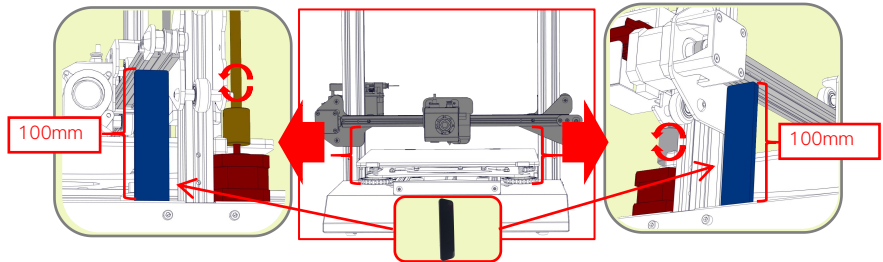
◆ Gantry Frame Installation



◆ Filament Holder Installation

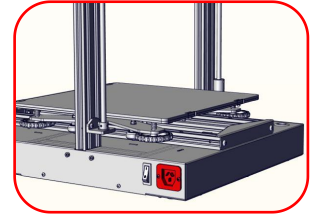
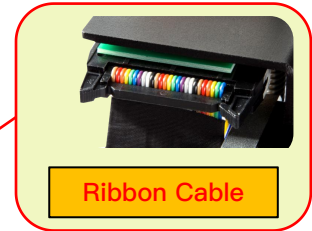
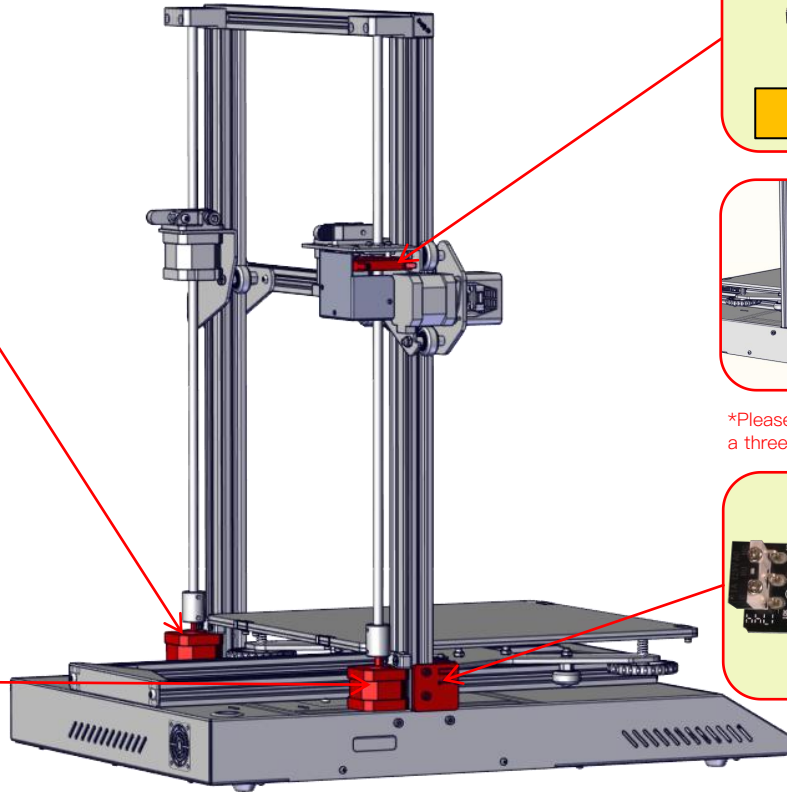
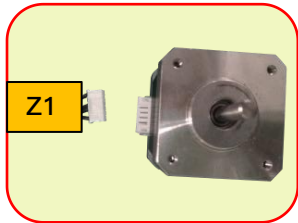
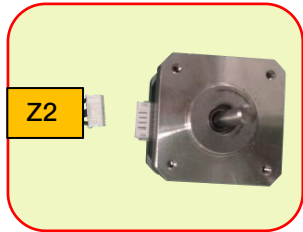


◆ X axis adjustment

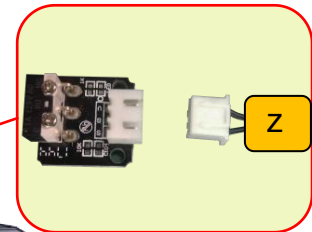


04/

Cable Connection

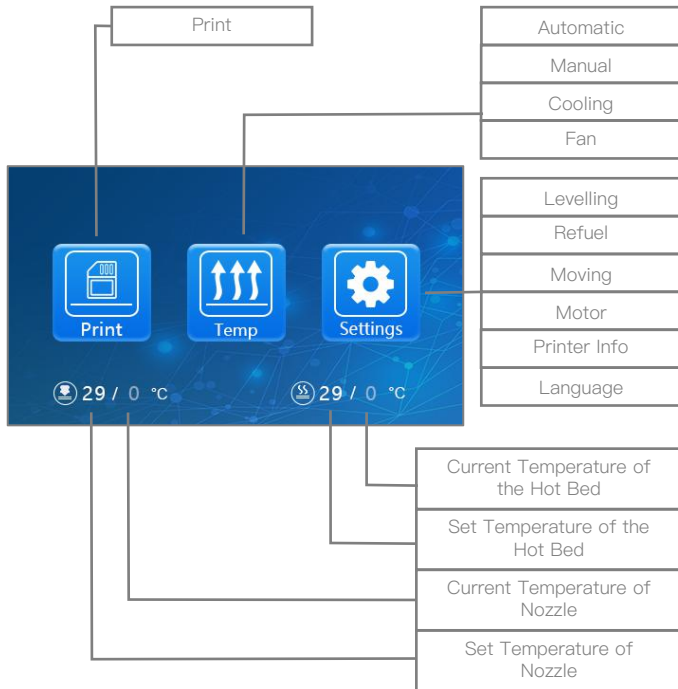


*Please plug the power cord into a three-hole power jack.



05/

Screen Information



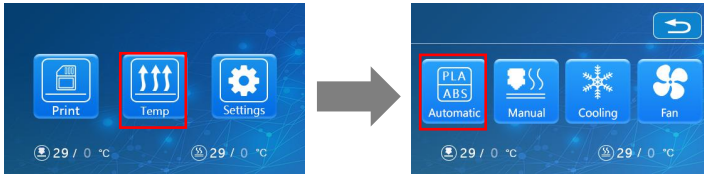
Screen Info.				
Main Menu	Sub Menu	Explanation		
TF card	Selected File	Stop		
		Pause		
		Printing Speed		
		Nozzle Temp.		
		Hot-bed Preheat		
		Fan(off/on)		
Temp	Automatic	PLA\ABS (185°\220°)		
	Manual	Nozzle Preheat		
		Hot-bed Preheat		
	Cooling	yes\no		
	Fan	(off/on)		
Setting	Levelling	Please Click Numbers to Assist Levelling (①-⑤)		
	Refuel	Withdraw		
		Feed		
	Moving	X-axis	Y-axis	Z-axis
	Motor off	yes\no		
	Language	English\Chinese		
Printer Info	Machine Type、Firmware Version、Printing Size、Website			

06/

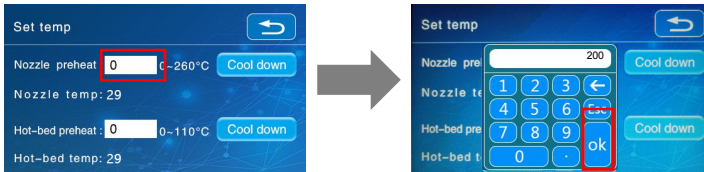
Loading Filament

Preheat

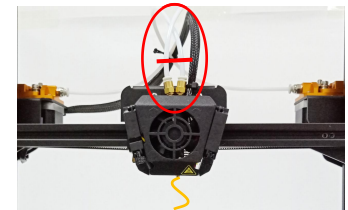
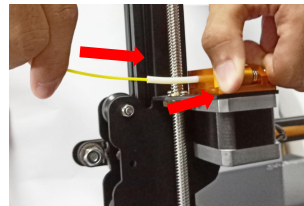
Method 1、



Method 2、



Feeding



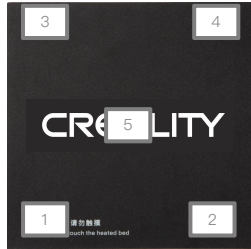
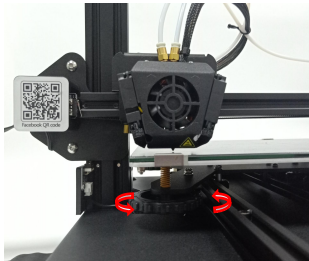
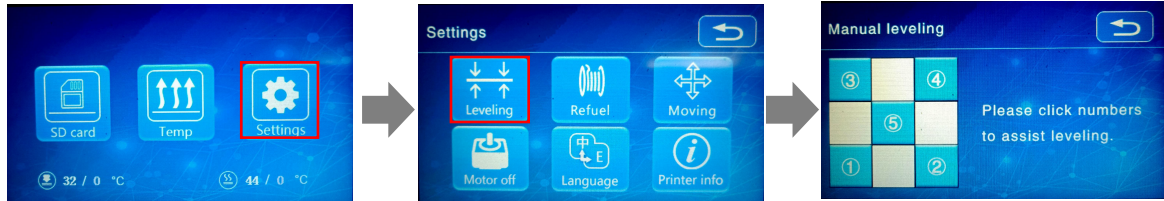
Press and hold the extrusion clip, insert the filament from the inlet to the position with red line above the small pneumatic connector.

* Check and ensure that the filament are on the position with the red line above the small pneumatic fittings before each print to ensure, otherwise, it will can cause plugging during printing.

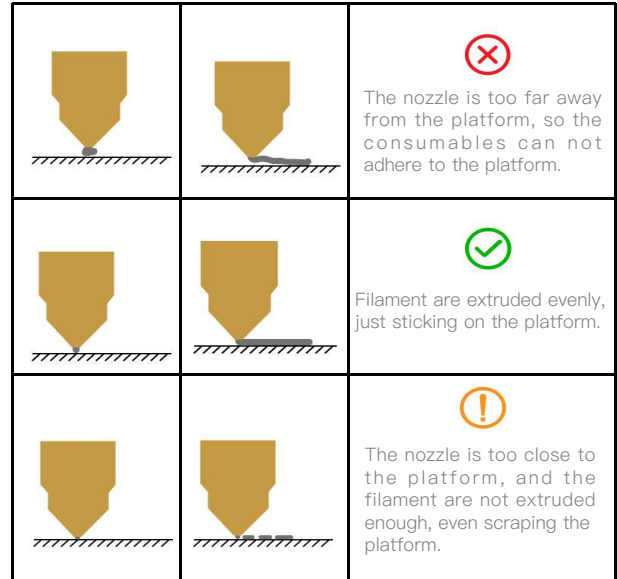
Q:How to Replace the Filament?

A: After the nozzles are preheated, quickly send the new filament to the position with the red line above the small pneumatic fittings.

07/ Bed Levelling



1. Tighten the four levelling nuts at the bottom of the platform before initial levelling.
2. Select Settings→Levelling, click on the number ①.
3. Adjust the platform height by turning the knob underneath. Use a piece of A4 paper (standard printer paper) to assist with the adjustment, making sure that the nozzle lightly scratches the paper.
4. Complete the adjustment of the screw on all 4 corners.
5. Click the number ⑤ to test whether the middle gap of the platform is suitable.
6. Repeat above steps 1–2 times if necessary.



08/

Software Installation



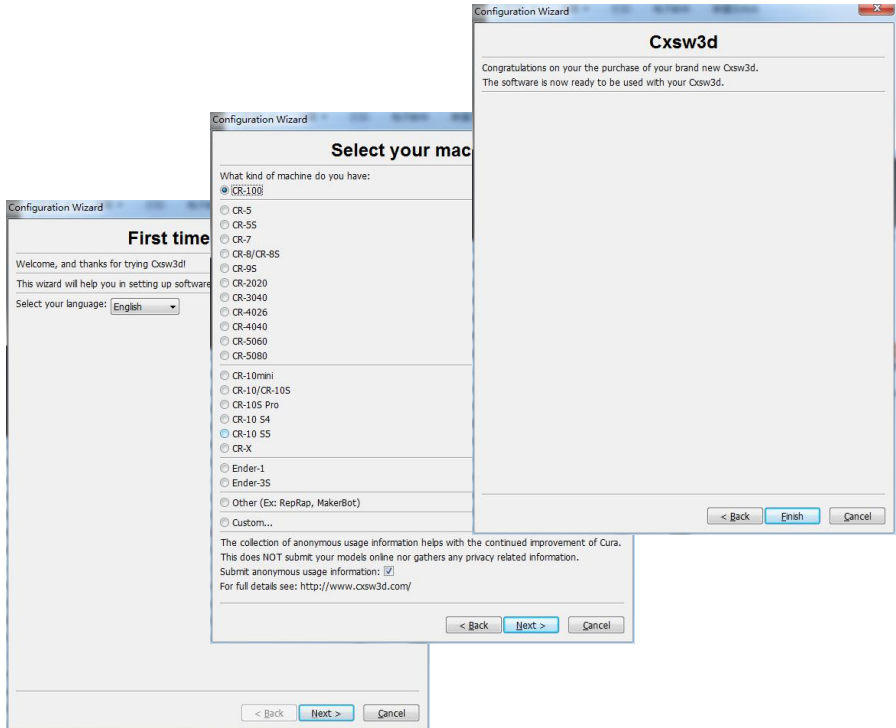
Creality
Slicer_1.2.1.msi

1. Double click to install the software.



Creality Slicer

2. Double click to open the software.



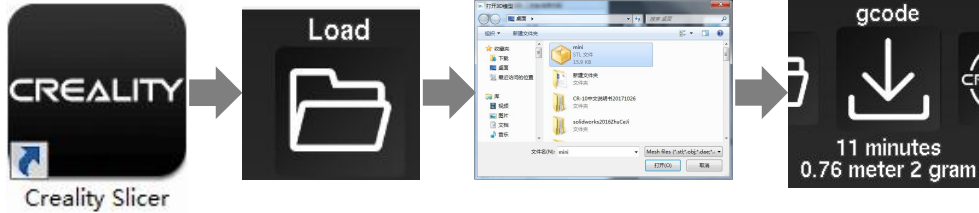
3. Select language→Next→Select your machine→Next→Finish.

09/

First Printing

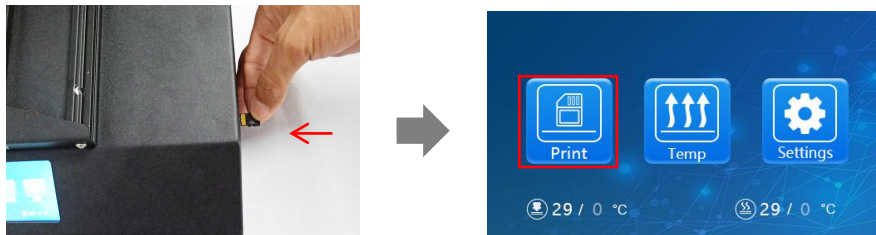
1.Slicing

Insert TF card into computer with Reader.



Open the software→Load→Select the file→Wait for slicing to finish ,and save the gcode file to TF card.

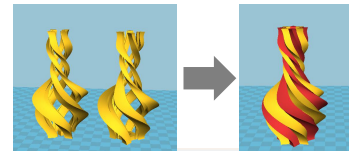
2. Print



Insert the TF card → Print → Select Model → Print

How to print in two colors (Dual-Color printer)

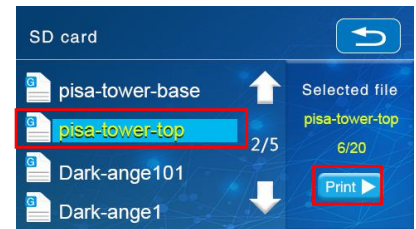
Load all parts of models



Dual extrusion merge

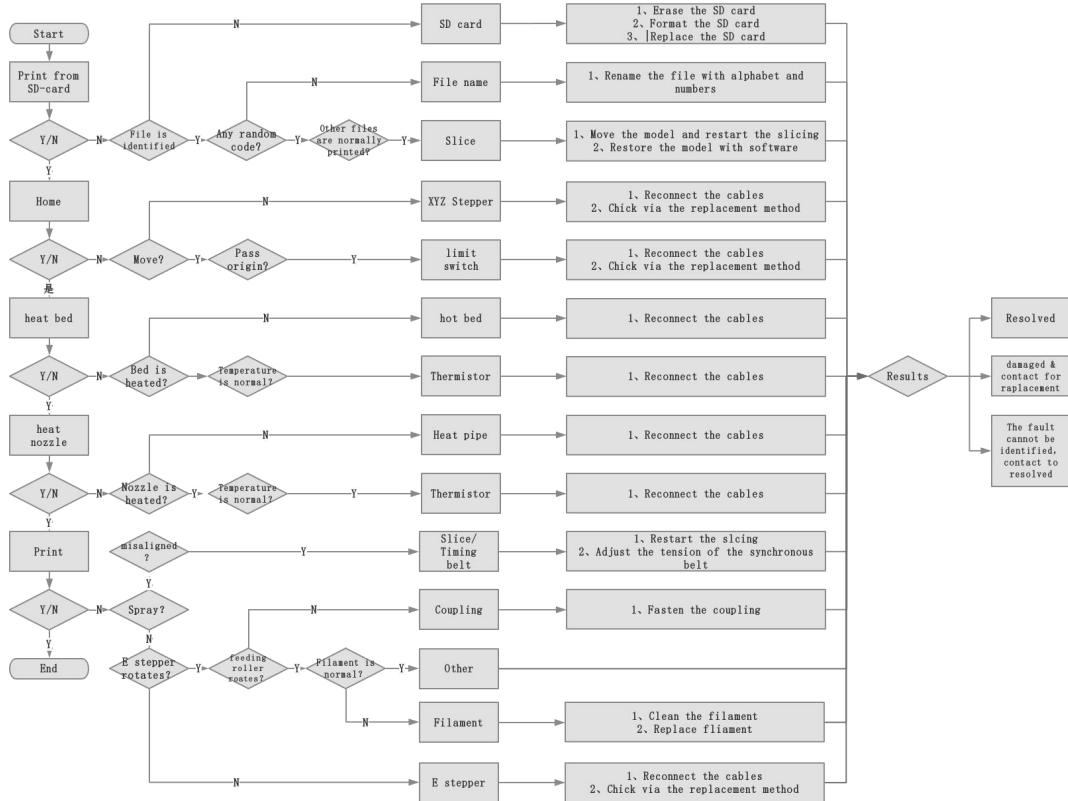
- Delete all objects
- Reload all objects
- Reset all objects positions
- Reset all objects transformations

R-Click to merge models



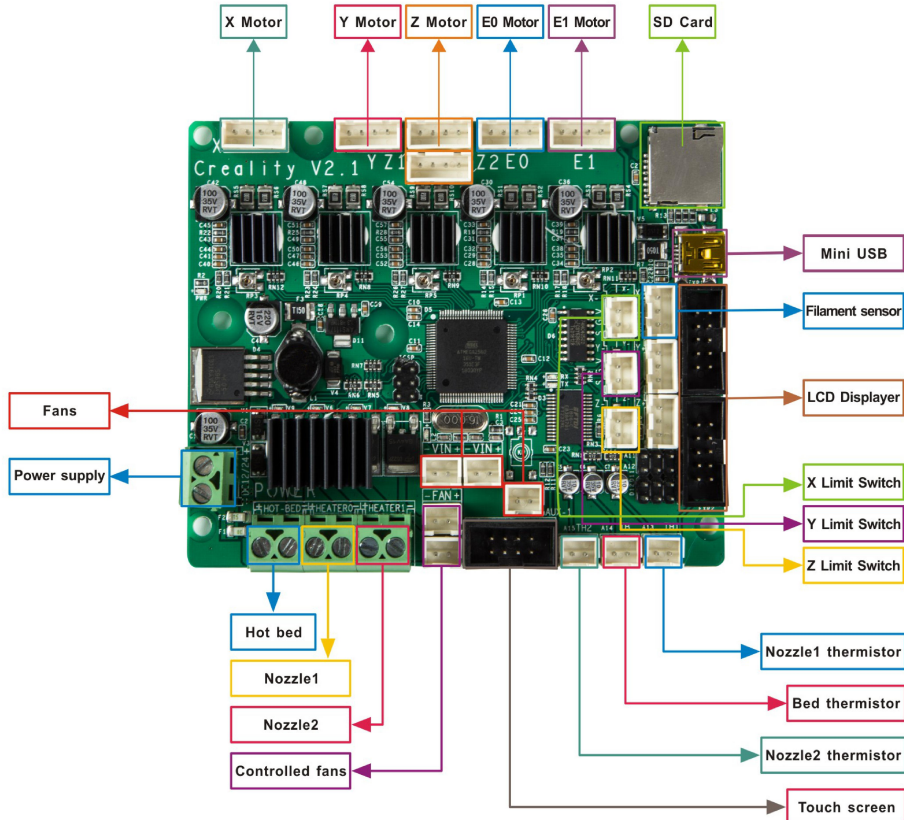
10/

Corrective Maintenance



11/

Circuit Wiring



After– Sales Service

Service

1, The printer can be returned within seven days, 15 days replacement, one year warranty, lifetime maintenance.

Replacement requirement

1. The appearance of the product is intact, without damage, scratches, smudges, cracks, deformation, etc.;
2. Machine parts, tools and others are complete;
3. Provide a complete and valid purchase invoice and warranty, product number should be the same.

Warranty coverage

1. The following accessories are not included in the warranty coverage if they are not damaged by transportation: platform sticker; platform forming plate; acrylic cover; card reader and TF card; platform glass; USB cable; filament; rack and tools, etc.
2. Profile: Before we deliver the goods, we will do the machine test, so maybe there will be light scratch, or due to long–distance transportation, which scratch the profile a little bit. in the premise of not affecting the normal use, in principle, not within the scope of warranty;
3. Nozzle assembly (nozzle, heating block, throat pipe, heat sink, Teflon tube, etc.) warranty period is 3 months, if it is damage after the warranty expires, you need to purchase another one;
4. Motherboard, LCD display, power supply, hot bed, warranty period is 12 months, if there are quality problems, you can get free maintenance; over the warranty period, can be sent back to the original factory maintenance, the users need to bear the return shipping and maintenance costs;
5. Not included in warranty coverage:
 - (1) It is not possible to provide an effective after–sales service card or serial number;
 - (2) The whole machine and components exceed the warranty period;

- (3) Equipment failure or damage caused by unauthorized modification of the equipment (private modification includes: 1. modification of the nozzle assembly; 2. modification of the machine structure; 3. use of third–party components; 4. use of third–party firmware procedures or change the original Factory firmware program, etc.);
- (4) Equipment failure or damage due to incorrect installation and use;
- (5) Equipment failure or damage caused by the use of the equipment in a working environment not specified by the product;
- (6) Equipment failure or damage due improper use (beyond workload, etc.) or maintenance (moisture, etc.);
- (7) Equipment failure or damage due to the use of other branded components or low quality consumables.



Facebook QR code



Website QR code

SHENZHEN CREALITY 3D TECHNOLOGY CO., LTD.

12/F, Block 3, JinChengYuan, Huafan Road, Tongsheng Community, Dalang,

Longhua District, Shenzhen, China, 518109

Official Website : www.creality3d.cn

Tel: +86 755-2105 9455

E-mail: info@creality3d.cn cs@creality3d.cn

